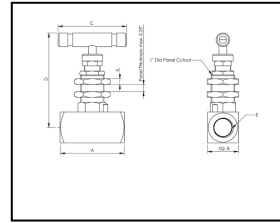


# NEEDLE VALVE-PNVHB



Product Name - PNVHB Series - Panel Mounted Bar Stock Needle Valve, 10,000 psi

Product Description -

HAVI Panel Mounted High Pressure Needle Valve are manufactured from Bar Stock and have an option of mounting the valve on

Panel. These Valves are 100% Factory tested for reliability and consistency in Leak Proof Service

## OPENIGS

Part No.(HAVI)	Quantity	NPTF	NPTF2	A	C	D	O-Orifice
PNVHB-4F	<input type="text"/>	1/4"	1/4"	58	70	104	6
PNVHB-8F	<input type="text"/>	1/2"	1/2"	66	70	104	6

Product Feature -

Working Pressure of 10000 psi

Panel Mounting Design.

Non rotating tip design to eliminate rotation between Seat and Tip.

Available in Straight, angle and cross configuration.

Stainless Steel Construction with options of packing for high temperature applications.

Colour coded dust caps for identification of Valve type.

100% Factory Tested.

Metal to Metal Seating.

Thread Rolled and Burnished Stem.

Differential hardened tip for life enhancement.