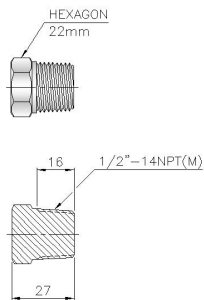
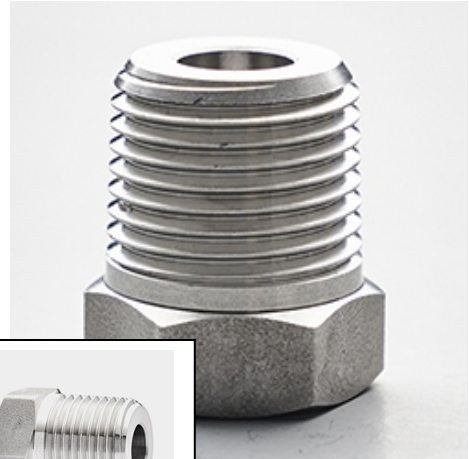


# HEX PLUG

PICTURE



## SIZE

**1) HNPXH6NL 1/4"**

**2) HNPXH6NL 3/8"**

Solid plugs are commonly used in everyday use throughout the industry. Whether you are closing a process, using as a plug for a thermowell or temporarily closing a thermocouple head, or using to machine an I.D. to adapt a tube. Solid Hex Plugs

Solid Hex Plugs are also for customers that take standard fitting and weld or thread non standard sizes on one end or make a custom fitting while embedding an RTD or thermocouple at the same time. Whether you are welding a stainless steel tube at one end. Solid hex plugs can be modified and used as needed without the expensive set up. Half the work has already been made for you.

Concentric Hex To Ensure Straightness on Threads when machining, welding a tube or pipe Non Magnetic Stainless Steel

Sharp Threads for Proper Engagement to Prevent Leaks

All CNC Machined, No Manual Polishing on Hex or Threads

Standard 316 SS and various alloys available upon request and may require minimum quantity

Don't see what you are looking for? Simply call and we can provide you a quote. We can supply in custom threads and various alloys.