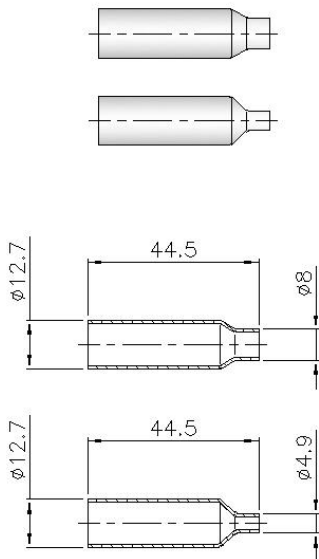


ATLG250-125-SS



- DISCRIPTION
- Material: **SS-316**
- Body Diameter: 3/8" OD
- For crimping or brazing to probe
- NON-Threaded

CAD



TRANSITION

- 1) ATLG125SS 3/8" OD X 1/8" NPT
- 2) ATLG1250SS 3/8" OD X 1/4" NPT
- 3) ATLG188SS 3/8" OD X 3/16" NPT
- 4) ATLG375SS 3/8" OD X 3/8" NPT

FEATURES